

Global Top-Tier Company for

**Water**  
**Energy**  
**Eco**  
**Health**



WELCRON Group | 12, 27-Rd, Digital-St, Guro-gu, Seoul, Korea Tel: 02-2107-6600 [www.welcron.com](http://www.welcron.com)

WELCRON Co., Ltd. | WELCRON HANTEC Co., Ltd.  
WELCRON HEALTHCARE Co., Ltd. | WELCRON GLOBAL VINA., JSC.

WELCRON Co., Ltd.  
WELCRON HANTEC Co., Ltd.  
WELCRON HEALTHCARE Co., Ltd.  
WELCRON GLOBAL VINA., JSC.



## MESSAGE FROM THE CEO



The **WELCRON GROUP** has achieved remarkable growth from the time it started as an industrial textile company in 1992, expanding into both consumer goods and energy and leveraging our state of the art technology.

Going beyond industrial fibers, **WELCRON** is leading the living and lifestyle markets  
**WELCRON HANTEC**: Water, Energy and Environmental plant / Leading general construction company

**WELCRON HEALTHCARE**: cares for people and the environment specializing in eco-friendly feminine hygiene products and organic beauty care line ups

**WELCRON GLOBAL VINA**: an overseas manufacturing platform and global market foothold of WELCRON GROUP

Moving forward, Water, Energy, Environment and Health will be our core drivers for growth and WELCRON GROUP will strive to be a family of global WELCRON companies that represents South Korea's excellence.

At WELCRON GROUP, we are committed for the health and happiness of people, fostering sustainable and eco-friendly environment, and to achieve and deliver best values for the communities we work together.

Chairman of WELCRON GROUP, **Lee Young Kyu**

## VISION & MISSION

### VISION

Global Top-Tier Company for  
Water • Energy • Eco • Health

### MISSION

With can-do-spirit and passion, we are working to achieve sustainable health of people and clean environment.

### Management Philosophy

We aspire to bring health and happiness to humanity (well-being), sustainable clean environment (Eco-friendly) and to create better work places for our employees to fulfill our commitment to shareholders and stakeholders (the great work place)



### Core Values

Creativity

Fundamental

Challenge Spirit

Collaboration

Passion

Integrity

Ownership

## KEY BUSINESS

Create group synergy through business of new growth engine!



- **Total living & Lifecare Business:** IoT included high-end bed furnishings, water & air treatment filter, medical materials
- **General Construction Business:** Engineering, construction, and supervision of industrial and commercial facilities
- **Food & Pharmaceutical Plant :** Health functional food, Liquid product, Bio/Pharmaceutical product
- **Healthcare Business:** Feminine sanitary napkin, Eco-friendly hygiene products, Quarantine mask & Sanitary goods
- **Eco-Friendly Future Energy Business:** Energy-saving plant, bio-energy plant  
secondary battery material plant, new & renewable energy plant

### WELCON Group is renovating to be the global leader

WELCRON has been achieved outstanding performance in the fields of total living & lifestyle (eco-friendly fibers and medical materials), water & environment and new energy business since 1992. Based on our success in Korea, WELCRON Group is striving for the global leading company by developing new growth engine, strengthening partnership and converging high-tech.



## GROUP HISTORY

Since establishment of WELCRON in 1992, WELCRON HEALTHCARE, WELCRON HANTEC and WELCRON GLOBAL VINA joined as family members. WELCRON GROUP is on the path of leading Korean conglomerates, serving global customers.

### 1992-2009

- May. 1992 Established Eunseong Corporation
- Oct. 1997 Established Bucheon Plant
- Mar. 2000 Established research institute
- Jul. 2000 Selected as a parts material technology development company (semiconductor wiper)
- Mar. 2001 Selected as a world-class product (microfiber cleaner)
- Apr. 2001 WELCRON, launched Premium household goods brand 'SESA' and entered Galleria Dep. Store
- May. 2002 Completed construction of new office building in Guro-dong, Seoul
- July. 2003 Listed on the KOSDAQ market on the Korea Stock Exchange
- Dec. 2003 Awarded Presidential Commendation for SMEs
- Oct. 2004 Selected as a secondary parts material technology development company (ultra-high performance filter media)
- Dec. 2005 Completed 2nd Plant in Eumseong, Chungbuk
- Apr. 2007 Incorporated subsidiary YEJIMIIN Co., Ltd.
- Dec. 2007 Changed the name to WELCRON Co., Ltd.

### 2010-2014

- Jan. 2010 WELCRON, Launched SESA LIVING - bedding brand, Started Road shop business
- Jan. 2010 Incorporated HANTEC Engineering Co., Ltd.
- Jun. 2010 WELCRON Selected as Korea Export-Import Bank Hidden Champion
- Aug. 2010 WELCRON, Ministry of Knowledge Economy WPM (Global top 10 core materials) Selected as development company
- Aug. 2010 WELCRON HANTEC Registered as a company specializing in renewable energy equipment
- Nov. 2011 WELCRON. Solely developed new body armor
- Dec. 2011 Yeongkyu Lee, CEO, received the Iron Tower Industry Medal
- Jan. 2012 Launched Chairman Yeongkyu Lee's system, WELCRON GROUP
- Jan. 2012 WELCRON, Small and Medium Business Administration Selected as 'Enterprise to be Fostered into Global Small Giant'
- Mar. 2012 WELCRON GROUP CI Integration
- Sept. 2012 Established WELCRON GLOBAL VINA in Ho Chi Minh City, Vietnam
- Dec. 2014 WELCRON acquired CCM(Consumer Centered Management) certification

### 2015-2022

- Mar. 2015 WELCRON established a corporate design reserch institutep
- Jun. 2015 WELCRON HANTEC acquired a license for civil engineering construction work
- Apr. 2016 WELCRON HANTEC acquired license for professional firefighting facility construction business
- May. 2016 Advanced into WERCRON cosmetics business Released Yejimiin mask packs
- Jun. 2016 WELCRON HANTEC acquired license for industrial ironment equipment construction business
- Jun. 2016 WELCRON HANTEC acquired license for industrial environment equipment construction business
- May. 2017 WELCRON GROUP's 25th Anniversary Proclamation of the Second Establishment and Celebrating the 25th Anniversary
- Jan. 2018 Established WELCRON GROUP Shanghai Branch
- Apr. 2020 WELCRON, Open Gajwa Consumer Goods Integration Center
- Apr. 2020 WELCRON HEALTHCARE, Launched Care-on face mask KF94, US FDA registered
- May, 2020 WELCRON, Expansion and relocation Gimhae composite Materials Center
- NoV, 2020 WELCRON, President Shin Jeong Jae received the Presidential Citation of Textile day Jan, 2021 WELCRON HANTEC, Launched Oview-construction brand
- Apr, 2021 WELCRON, Renewal open 'WELCRON mall'
- May, 2021 WELCRON Promoted to the KRX Blue-chip Enterprise Department
- Nov, 2021 WELCRON 'Microfiber Cleaner' selected as the "World's Best Product" for 20 consecutive years
- Jun. 2022 WELCRON Held 30th Anniversary Celebration - Declare "Leaps to High-tech Material Company"



WELCRON Flagship Store  
SESA EDITION

## WELCRON

- Established: June 1992
- Sales: KRW 110.1 BILION (AS OF 2021)
- Listed on KOSDAQ: July 2003
- Number of employees : 216
- Head office: Digital 1 complex in Guro-gu, Seoul
- Plant: Yongseong-ri, Samsung-myeon, Gimhae-si, Gyeongsangnam-do
- Gimhae Composite Materials Center: 110, Hagye-ro 240beon-gil, Jinyeong-eup, Gimhae-si, Gyeongsangnam-do
- Gajwa Consumer Goods Integration Center: 31, Gajaeul-ro 32beon-gil, Seo-gu, Incheon
- Equipment Possessed
  - ▶ Mett Blown Commercial Line,
  - ▶ Pilot Line, Laminated M / C.
  - ▶ Calender Line, etc.
- Overseas Offices
  - ▶ US Office
  - ▶ Canadian Office (Toronto)
  - ▶ German Office (Frankfurt)
  - ▶ Netherlands Office (Amsterdam)
  - ▶ Spanish Office (Madrid)
- Certification Status
  - ▶ ISO 9001/14001
  - ▶ InnoBiz Certification
  - ▶ CCM (Consumer-Centered Management) Certificate
  - ▶ Selected as 'Hidden Champion' by Korea Export-Import Bank
  - ▶ IBK Industrial Bank of Korea Plus 500 Export Small Giant
  - ▶ Certified as being a Global Top-Tier Product Company by the Minister of Knowledge Economy (Microfiber Cleaner)
  - ▶ Ministry of Knowledge Economy WPM (Global Top 10 Core Materials) Development Company

Eumseong Plant



Gajwa Consumer Goods Intergration Center



Composite Material-Center



## Total Lifestyle Living Company Leading Healthy Living Culture

WELCRON has more than 30 domestic and foreign patents in the field of microfiber and is now growing into total-living lifestyle company through its living business and microfiber cleaner business, which are closely related to everyday life. WELCRON is leading the advanced materials industry by expanding its business into areas such as nano-fiber, super-fiber, eco-friendly fiber, high-efficiency filters, defense. In recent years, the company has introduced the cosmeceutical brand 'CELLMIIN'.

### Business Areas

**Living Business:** Development / production / distribution of the WELCRON premium brand with microfiber bedding

- SESA premium functional bedding brand : 60 famous department stores nationwide including Shinsegye, Lotte, Hyundai, Galleria AK Department Store
- SESA Living (Allergen-resistant bedding brand): 190 distributors nationwide
- SESA Edition (Premium Life Flagship Store)
- Other brands: Serapy, Pure Sleep, etc.
- Smart Living Products: Snoring prevention pillow with IoT Sleep pattern analysis mattress cover, etc.

### High Functional Cleaner: No.1 leader in global market of microfiber cleaners

- Cleaning supplies, Kitchen clothes, Sports towels, Pet care, Car cleaner, etc.

### Environment, Medical Materials Business: Mass production of materials for atmospheric environment, water treatment filters and raw materials

- High efficiency filters: ULFA filter, HEPA filter, Air filter, Water treatment filter, Industrial respiration masks, Yellow dust protection and disease prevention masks
- Special filters: Fuel and oil filters - Air filter, other special items, etc.
- Medical supplies: TPU band blood filter, Artificial blood vessel tube

### Defense Business: Development and procurement of defense materials using advanced nanotechnology and new material armor fiber

- Military articles: Body armor, Anti-knife armor, Buoyant body armor, EOD suit Bulletproof helmets, Military uniforms, Bulletproof Plate for equipment, CBR (Chemical, Biological, and Radiation) Protection suit, etc.

### Development of nanofiber-applied products

- Household goods: Cleaner and towel materials, Bedding materials, etc.
- Artificial leather products: Material, Insoles, Gloves, etc.
- Cosmetic products: Cosmetic cloth, Mask pack sheets, etc.
- Pet Supplies: Pet towels, Pet mats, Pet sheets

### Cosmetics Brand (CELLMIIN)

- Feel-A-Green (moisturizing / regenerating) cosmetics : Cosmetics exclusively for sensitive skin made from 100% safe ingredients
- Superior regenerating function due to active ingredient of skin protein pillar green included in products
- Daily Defense (Anti-Pollution) Cosmetics : Protects skin from fine dust and urban pollution by utilizing an ion system
- Functional mask packs : Dual synergistic mask packs that combine special sheets and functional essence prescription for enhanced effectiveness





WELCRON GLOBAL VINA Manufacturing facility

## WELCRON GLOBAL VINA

- Established: October 2012
- Sales: KRW 21 BILLION (AS OF 2021)
- Number of employees: 420
- Headquarters and factories :Within the Longtan Industrial Complex in Dong Nai Province, Vietnam
  - ▶ Plant area: approx. 25,000m2
- Machinery Equipped
  - ▶ Cleaner: Sewing machine
  - ▶ Fabric: Superpol machine FBZ Knitting Machine
  - ▶ Bedding: One Head machine. Quilting machine. Pillow machine, etc.
- Annual production capacity
  - ▶ Microfiber Cleaner 40 million sheets
  - ▶ Bedding: 100,000 pieces

HQ Front View



WELCRON Ho Chi Minh Office



## WELCRON Group's Overseas Production Base and Global Market Entry Bridgehead

WELCRON GLOBAL VINA serves as an overseas production base for functional bedding and microfiber products, as well as an overseas sales subsidiary of WELCRON and WELCRON HEALTHCARE products. WELCRON GLOBAL VINA acts as a bridgehead for WELCRON HANTEC in global expansion of energy business and plant equipment business, which are the next growth engines of WELCRON GROUP, and also acts as a base in search for foreign market opportunities.

### Business Areas

#### Microfiber cleaner and bedding business

- Microfiber cleaner and bedding production
- Microfiber Cleaner (3 million sheets per month), functional bedding (30,000 sets per month) Production
- Other microfiber household goods business

#### Export of sanitary products to Vietnam and Southeast Asia

- Herbal Medicine - Export of general feminine sanitary napkins and Hot Fomentation Pads
- Export of household products such as wet tissues and toilet paper
- Export of medical products such as TPU bands, blood filters, and artificial blood vessel tubes

#### Plant Facilities & Overseas Production Base

- Construction of Food-Pharmaceutical plant and water treatment plant





## WELCRON HEALTHCARE

- Established: September 2002
- Revenue: KRW 17.4 BILLION (AS OF 2021)
- Number of employees: 100 people
- Headquarters and Plant #1 : Sipjeong-dong, Bupyeong-gu, Incheon
- Plant #2 : Yongseong-ri, Samseong-myeon, Eumseong-gun, Chungcheongbuk-do
- Equipment Possessed
  - ▶ Sanitary napkin production line
  - ▶ Liner production line
  - ▶ SAP sheet production line, etc.
- Certification Status
  - ▶ ISO 9001/14001
  - ▶ InnoBiz Certification



## Leading the Development of Hygiene Healthcare Specialist

We are the first in Korea to develop YEJIMIIN sanitary napkins containing herbal ingredients and lead the market of Korean Herbal Sanitary napkins. We are leading the premium sanitary napkins market by developing eco-friendly sanitary napkin products such as organic cotton materials and Tencel fabric. In recent years, the company has introduced the cosmeceutical brand 'CELLMIIN', And we are growing into a beauty and healthcare company. In recent years, the company is launching a dust mask brand, CARE ON, to become a healthcare specialized company.

### Business Areas

#### Feminine hygiene products

- Yejimiin Yoonseul: Korea's first oriental sanitary napkin with oriental medicine applied directly
- Yejimiin Forest Story: Refreshing fit of natural vegetable fiber biocell cover
- Yejimi In One Day Sunmyeon : All parts in contact with the skin are covered with pure cotton for a soft feeling without irritation.
- Yejimi In One Day Sunmyeon Organic: A sanitary napkin of materials with organic cotton cover for users who are sensitive
- Yejimiin Pogney: Comfortable fit with a warm embossed cover
- Yejimiin Soon Slim: A slim type product that does not show off on the day you need to pay attention to fit
- Yejimiin Pureline Feminine Wash: A mild cleanser for women's weak Y-zone management (foam type/gel type)
- Yejimi Klar: The freshness of the biocell cover provided by the noble nature
- Yejimiin Daily Cotton: Comfort that covers delicate skin with a cotton touch cover
- My healthy Yejimi: Relaxing comfortably even on the day with oriental herbal scent

#### Household Goods

- WELGRU Toilet Paper: Thick 3-ply embossed toilet paper with 100% natural pulp
- CLEAN Kitchen Towels: The Kitchen towel is made of 100% natural pulp and has embossing of PTP method for strong absorbency and dust free.

#### Dust & Quarantine Mask

- Care on Safe Medi Mask (KF94): A 2D bird-beaked mask (European CE certification obtained) that blocks very small particles and viruses with MB filter created with Welcron's innovative technology and boasts a refreshing fit even when worn for a long time with Aquatrans lining /Skin hypoallergenic test certified)
- Care-on Sanitizer Gel: A hand sanitizer with a strong disinfection effect of 99.9% with 70% high content ethanol
- Care on Sanitizer Mist: A spray-type hand sanitizer with a fragrance and colorful color to choose from, with a basic sterilization and disinfection effect.





OVU COSTA (오부 코스타)



## WELCRON HANTEC

- Established: January 1994
- Sales: KRW 266.6 BILLION (AS OF 2021)
- KOSDAQ: July 2008
- Personnel: 260 people
- Headquarters and Plant: Hyangnam-eup, Hwaseong-si, Gyeonggi-do
- Seoul office: Guro-dong, Guro-gu, Seoul

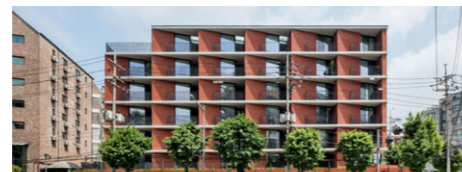
### Water, Environment, Energy and Human BUILD YOUR FUTURE & DREAM

WELCRON HANTEC is the leading general construction company based on outstanding performance of plant engineering, development and civil infrastructure. Also WELCRON HANTEC has enhanced the business field to energy saving, food and pharmaceuticals, waste water treatment and renewable energy power generation plant.

#### Business Areas

##### General construction

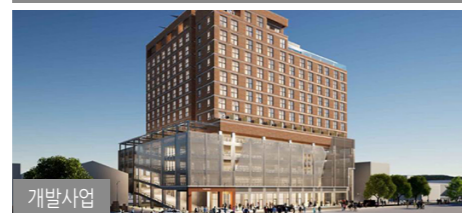
- ▣ **General facilities**  
office, commercial, school and R&D center, hotel & leisure park, medical & cultural center
- ▣ **Development**  
CM, planning & design, land development, consulting, officetel, housing, town house
- ▣ **Industrial facilities**  
production facilities(food, pharmaceutical, biotechnology, semiconductor, freezer storage, automobile), logistics, clean room, GMP/HACCP
- ▣ **Civil engineering**  
public building, site construction, road, bridge, tunnel, military base, railroad and subway



General Architecture (Korea Architecture Culture Award)



산업시설



개발사업



공공/토목



WELCRON HANTEC  
Seoul Office



MVR evaporation Facility



Daesan Power co.,LTD heat supplying facility construction work

- Certification Status
  - ▶ Registered mechanical equipment construction business
  - ▶ Registered as a special construction company for water quality and environment
  - ▶ Registered civil engineering construction business
  - ▶ Registered electric business
  - ▶ Registered real estate development business
  - ▶ Registered firefighting facility
  - ▶ Registered as housing construction company
  - ▶ Registered green remodeling business
  - ▶ Registered as a partner company of KEPCO KPS (Electricity, Machinery)
  - ▶ ISO 9001
  - ▶ ISO 14001
  - ▶ ASME U STAMP Certification
  - ▶ Environmental New Technology Certification
  - ▶ Certified as a maintenance company (Korea South-East Power Development Co., Ltd.)



WELCRON HANTEC Balan Plant

#### Plant engineering

- ▣ **Energy saving & Evaporation / Crystallization facilities**  
MVR and TVR type evaporation, crystallization (Amino acids and inorganic metals), Drying facilities (Tube Bundle, Disk, Flash, Ring Dryer), Zero Liquid Discharging system (ZLD)), Rechargeable battery materials (nickel sulfate and lithium sulfate evaporation/crystallization, solvent recovery for rechargeable battery separator)
- ▣ **Food and Pharmaceutical facilities**  
Automatic production system for drinks such as juice, tea, coffee  
Dairy production facilities, Extraction and concentrating system for health food, Bio & pharmaceutical production system, Filling facilities (bottle, can, PET), Inspection and packaging facilities, Logistics automation facilities
- ▣ **Environment facilities**  
Waste water treatment (Anaerobic, nitrogen, sulfur treatment)  
Power plant waste water, waste water desulfurization, Food & Livestock waste water recycling, Water treatment (pure water, ultra pure water, water purification, seawater recycling)

#### Energy business

- ▣ **Renewable energy**  
Incineration power generation and heat supply using waste and sewage sludge, Bio-energy power generation and heat supply (biogas, biodiesel)
- ▣ **consigned Waste water tretment & Seawater desalination facilities**  
wastewater drying and MBR combination for consigned wastewater treatment facility, Reverse osmosis water treatment (SWRO, BWRO), Hybrid facilities



Wastewater treatment facility



Food and Pharmaceutical plant



Reverse Osmosis Water Treatment Facility



consigned Waste water treatment facility

### WELCRON GROUP's CSR Activities

WELCRON GROUP will create a healthier society by taking the lead in providing a hand to those in need.

#### Disaster relief activities

Participation in disaster recovery activities and supply of necessities

WELCRON GROUP carries out relief activities for various disasters such as oil spills and landslides, actively participating at Group level. As a Korean corporation, WELCRON GROUP actively participates in relief efforts in the event of national disasters.



#### Helping underprivileged neighborhoods

Coal briquettes volunteer activities, providing bedding for senior citizens living alone

WELCRON GROUP continues to engage in social contribution activities to help people in need such as the underprivileged and elderly people living alone. Every year, we carry out briquette donation activities for underprivileged neighbors. We also regularly provide WELCRON's functional bedding as well, for the elderly living alone to stay warm in the winter.



#### Industry-Academy Cooperation and Scholarship Support Program for Science and Engineering Universities

WELCRON GROUP has been supporting scholarship programs for science and engineering students since 1997.

We are leading the way in nurturing talented people through industry-academy cooperation agreement with Keimyung University, Kumho University, Bupyeong Technical High School, THUDUC College in Vietnam, and Hanyang Women's University



#### Sanitary Napkin Support Project & Sex Education for Adolescents

Since 2008, WELCRON GROUP has consistently been providing free sex education program for adolescents, to approximately 100 schools (80,000 students) per year. In addition, YEJIMIIN sanitary pad donation activities are taking place at home in South Korea and also around the world, in places such as North Korea, Vietnam, Kyrgyzstan, Philippines, Syrian refugee camps, and Mongolia.



WELCRON Co., Ltd.	LA - USA, Canada Toronto, Germany Frankfurt, Spain Madrid, UK, France, Russia, Japan, China, etc.
WELCRON HANTEC Co., Ltd.	China, Chile, Philippines, Brazil, Indonesia, Saudi Arabia, Malaysia, Vietnam, Myanmar, USA, Japan,
WELCRON HEALTHCARE Co., Ltd.	China, Japan, Indonesia, Singapore, USA, Taiwan, New Zealand, Mongolia, Russia, Vietnam, Kazakhstan

### WELCRON GROUP Main Business



#### WELCRON GROUP & WELCRON Headquarters

12 Digital-ro 27-gil, Guro-gu, Seoul  
 Tel: 02-2107-6600 / Fax 02-539-2183  
 Website: www.welcron.com  
 Onliving Mall: www.onliving.co.kr / SESA: www.sesa.co.kr / SESA Living: www.sesaliving.com



**WELCRON Plant / WELCRON HEALTHCARE Plant #2**  
 383 Cheongyong-ro, Samseong-myeon, Eumseong-gun, Chungbuk-do  
 Tel: 043-879-8851 / Fax: 043-879-8859  
 Website: www.welcron.com



**Gimhae Composite Materials Center**  
 110, Hagye-ro 240beon-gil, Jinyeong-eup, Gimhae-si, Gyeongsangnam-do  
 Tel: 055-346-6808



**Gajwa Consumer Goods Integration Center**  
 31, Gajaeul-ro 32beon-gil, Seo-gu, Incheon  
 Tel: 02-2107-6652



**WELCRON HANTEC Plant**  
 92-36 Balangongdan-ro, Hyangnam-eup, Hwaseong-si, Gyeonggi-do  
 Tel: 031-350-8900 / Fax: 031-350-8960  
 Website: www.welcronhantec.com



**WELCRON HEALTHCARE HQ & Plant #1**  
 5 Baekbeom-ro 603beon-gil, Bupyeong-gu, Incheon  
 Tel: 032-583-3344 / Fax: 032-571-7722  
 Website: www.yejimiin.com



**WELCRON GLOBAL VINA**  
 Long Thanh Industrial Zone Dong Nai Province, Vietnam  
 Tel: +84-618-514-198